

December 2000

Editor: Marian Meyer

**TREE REMOVAL TO START SOON—THANKSGIVING
SNOWSTORM DOWNS MORE LIMBS**

PRESIDENT'S MESSAGE FROM JOHN ADAMS

FALL CLEAN-UP RAINED OUT

COMMITTEE APPOINTED TO FIND OLD EMPTY GRAVES

MORFORD MCCRARY TO GIVE PLOT TO OUR ASSOCIATION

MAGNIFICENT EXHIBIT ON JEWISH PIONEERS AT MUSEUM

INTERMENTS: ENOS STRAWN

WE THANK YOU FOR A TOTAL OF \$2955.00 IN DONATIONS

LETTER FROM THE PRESIDENT
WE ARE NOT ALONE.

That is what I found when I read a recent issue of the US Golf Association magazine. They reported that because of three years of drought, all courses all over the western United States have had to do extensive repairs to their irrigation systems. The overall drying out of the land causes shrinkage that pulls at various parts of the systems and they give way at their weakest points.

I am pleased to tell you that we have completed repairs on the sprinkler system and have installed cut-offs and drains for the old big system. The sprinkler system was purged under pressure and galvanized pipes were completely drained. This winterization should mean a quick start up next spring. Thanks to Earth and Water for giving us another substantial discount on this work.

We have also installed a frost-proof faucet near the front gate to allow us to water in the winter. So far we have had some good snows and haven't had to use it—but it is ready when we do. NOTE: *Anyone who*

uses a hose with this faucet MUST detach it afterward. This is essential because with a hose on it can freeze.

The work planned on our trees had to be revised due to city water restrictions. It turned out that the Re-leaf program would no longer allow us to use that money for tree removal. At the time of the grant deadline the city rules still did not allow for new tree planting. So we have put off the application until next year.

In the meantime, Jim Freeman, our certified arborist, has completed his study of hazardous trees and has identified 29 that he believes should be removed. Donations so far will allow us to accomplish about a third of this work. Your board will meet in a few days to review the priorities so the work can be done over the winter. It will be painful to say goodbye to many old tree friends but two major rotted limbs came down this summer. The recent wet snow brought a lot of other deadfall. We have been lucky that no one has been hurt or property damaged. Please be careful when you are anywhere around the marked trees.

I intend to prepare a special financial report for the year to give everyone a complete picture of our situation. We continue to need your support. We

appreciate people like Morford McCrary who donate unneeded plots back to the Association. Sales at \$2000 per plot help build our assets. We appreciate those of you who have given money to remove one of the old trees at about \$300 each. We also appreciate donations for new trees to be planted at about \$180 each. We continue to hope for stock donations that can benefit the donors as well as helping the Association. Thank you for your support this year and may your holidays bring joy and hope for the year to come.

John Adams, President.

NOTE TO READERS: Marian already had the newsletter completed with a space for the president's message, so there is a duplication in a couple of items. This needs to go to the printer immediately, so she won't change it.

SPECIAL FALL CLEAN-UP RAINED OUT

We had been praying for rain for weeks, we just didn't want it on the Fall Clean-Up Day. It is only the second time in 20 years we have been rained out, so guess we can't complain. We'll have to make up for it at the May Clean-up and Potluck.

THANKSGIVING STORM DOWNS LARGE LIMBS

Most of the limbs which broke in the storm the night before Thanksgiving fell in the cemetery grounds, but some were on the roads. One blocked the entrance to the tenant's house, so her host came and got her Thanksgiving morning. The people we would normally call on were not available, so the husband of our treasurer, Charles Stotts, went over and removed the trees from the roads. He said a couple had already frozen into the snow and required some effort to pull out. Thanks, Charlie. We still have the job of getting the others cut up and hauled off.

TEN OR MORE LARGE TREES TO BE REMOVED

We have gotten one estimate on tree removal and have some others coming. It is expensive, but is absolutely essential. You wonderful friends of Fairview gave us over \$3000.00 for work on trees so we feel free to spend that. The rules for the Re-leaf Grant were changed to not pay for tree removal so that won't help us. We will also have to wait and see whether the City will let us plant new ones next year.

Several of the old box elders along the entrance in front of the Catron Mausoleum are doomed. They may be close to a century old and although they were once gorgeous trees, we have had them trimmed many times. On some there is not much growth left and others have great splits in the trunks. But we have to look on the positive side. The box elder is not native to New Mexico. The early members of the Women's Board of Trade liked trees they were familiar with in the East so those species were imported. It also means we may be able to get rid of the red box elder bug which is so tenacious every spring. We even have to spray around the

house to eradicate them. Then it is okay until the next spring. If we get rid of the trees, maybe we will get rid of the bug.

INTERMENTS

The ashes of Enos Strawn were interred in the grave of his grandfather, Samuel McBride, in Section B. Strawn was a graduate of UNM and had a career as a geologist for an oil company which became Amoco. He retired to a lower altitude in California where he lived out his life. He and his family have been supportive of our Fairview efforts for several years. His wife and daughter and her husband now live in the area. His grandfather McBride was the Station Agent for the D&RG Chili Line in Espanola for most of his life.

CONTRIBUTIONS WERE \$2955

This is a good amount to have received in the short period since our September newsletter and we thank you very much. As we have said many times, your gifts are the lifeblood of our Association. Eleven contributions were received, ranging from \$25.00 to \$1100.00. The donors were:

Ball, Jean and Ron	Littleton, Judi and Dick*
Bentley, Verda	Michaelsen, Rachael
Blauvelt, Ardyth	Miller, Vera
Catron, M/M Thomas B.*	Moore, Tom & Diane*
Corbett, Nancy (2)	Sleeper, Sue
Fletcher, Betty Moore*	Tolen, Julianne Loomis*
Gilbert, Dorothy	

**MEMORIALS*

In memory of Stephen Ellis Catron from M/M Thomas B. Catron; to Grace Moore from Betty Moore Fletcher; to Nadine McCrary from Judi and Dick Littleton; to Esther Mason from Tom and Diane Moore and Julianne Loomis Tolen.

MORFORD MCCRARY TO GIVE EXTRA LOT TO US

After the ashes of his wife Nadine were interred at Fairview, Mr. McCrary decided that his ashes will also be placed in her grave and they would not need their second plot. He told Bob Clifford who is on our Board that he wants to give it to our Association. We just haven't had time to get the quitclaim deed completed, but will soon. It is located in Section D, south and west of the Staab enclosure.

COMMITTEE WORKING TO FIND OLD EMPTY GRAVES

The president appointed a committee to try to locate old graves where there has been no contact with family members for 50 to 90 years. We hope to quiet title them so that our Association can make them available for sale. Committee members are Margaret Brunk, Marian Karlson, Gene Valdez and Marian Meyer.

Marian Meyer had already researched some of them and knew the family histories. In these cases, we know there are no living relatives. The first large headstone as you enter the cemetery is one example.

Max Frost had three wives, but only one child who lived. That son, Graham Frost, died in Texas and had no children. Max Frost was the first president of the Fairview Cemetery Company, an ineffectual group of men who finally turned over the management of Fairview to the Woman's Board of Trade. There are only three burials in Frost's plot of 12 or more lots.

Two others who originally had six lots each and have 2 or 3 lots empty are E. L. Bartlett, Solicitor General of New Mexico and Dr. William Harroun. Bartlett's wife Cora was the first president of the Woman's Board of Trade. The 1900 census reports that Cora had four pregnancies, but evidently she lost all but one baby who is buried at Fairview. Cora died in the Insane Asylum at Las Vegas. The tragic story ended with Bartlett's death in 1904. His will said his diamond shirt studs were to be sold and the money used for a stained glass window at the Church of the Holy Faith in memory of his wife. Ellen Palen followed his request but made it to honor both of them.

Dr. Harroun and his wife Mary have one child buried at Fairview. The other son, Phillip, became an engineer and outstanding photographer. Arthur Olivas, photo archivist at the Fra Angelico History Library compiled his photos and wrote a book on him. Phillip and his wife had one daughter who did not marry and who left many of her grandparents' possessions to the museum, including Mary's piano. Mary was the founding president of Santa Fe's oldest woman's club, the 109-year-old Fifteen Club, a literary group.

These are just three of the tenants of Fairview who are well documented. The committee found a great many others, looked up their obituaries and found no surviving relatives. In these cases the records show only one or two empty graves. Included are Landis Mallieson, Marcel Pincenti, R. H. Woolverton, Mildred Parton and Harry Niblock.

If you have information on any of these, please call Marian Meyer, 982-5635.

MAGNIFICENT EXHIBIT MOUNTED ON JEWISH PIONEERS OF NEW MEXICO AT MUSEUM

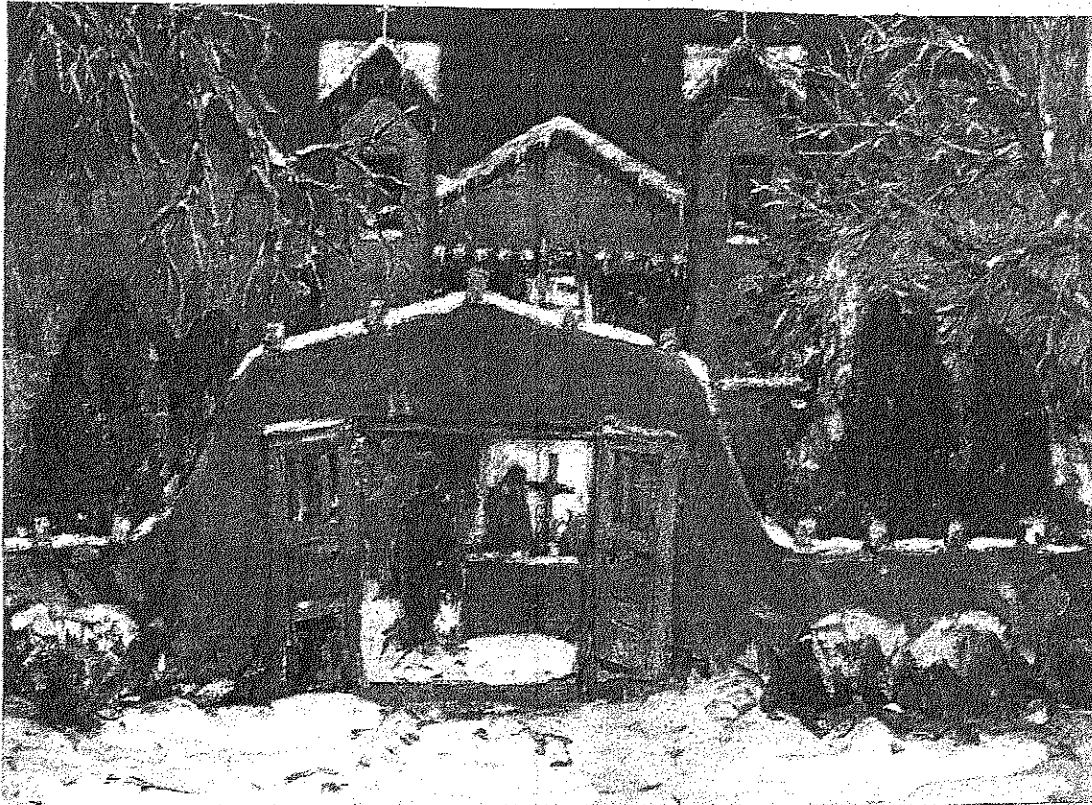
A new five-year exhibit on Jewish Pioneers opened at the Museum of New Mexico about a month ago. Many of those who settled in Santa Fe are buried at Fairview Cemetery, so our Association is well represented with some of the earliest and most important merchants including Luis Gold, Abraham Staab, Solomon Spitz, Samuel Eldot, Solomon Gusdorf, Sigmund Wedeles, Solomon Lowitski and many others.

If you haven't visited the exhibit yet, New Mexico residents can go on the first Sunday of the month, either free or for \$1.

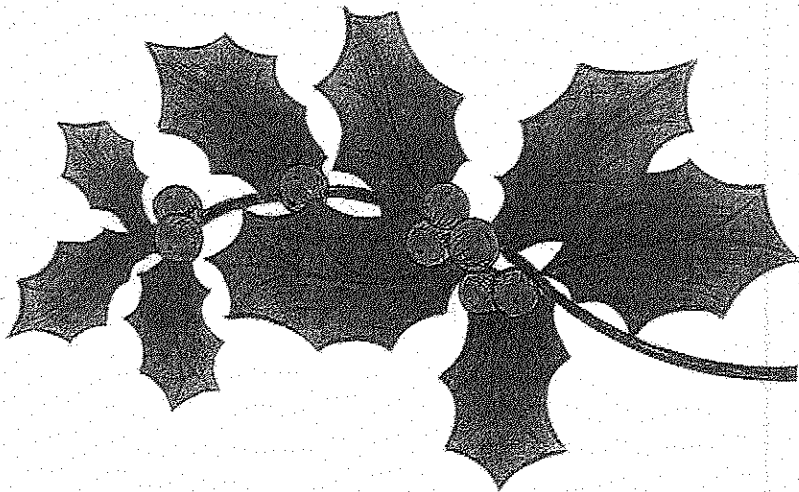
JOSEPH AND ROSALIA HERSCH

Marian Meyer has researched many of the old Jewish families at Fairview. One of the most interesting are the Hersches. She met the granddaughter of Joseph and Rosalia many years ago and has kept in touch with the family. The museum has had Rosalia's huge piano in their collection since 1953. It came over the Santa Fe Trail in an ox cart. One item not included in the exhibit narrative on Joseph was that he was said to be the wealthiest man in New Mexico at one time. An entire wagon train of his was wiped out by Indians and in the years before his death in 1901, he had applied to the federal government for compensation for Indian depredations. Charles Bennett, Assistant Director at the museum, plans to make some additions and corrections to the exhibit. Marian Meyer will provide some of the information from her files.





FAIRVIEW CEMETERY PRESERVATION ASSOC.
P. O. BOX 5958
SANTA FE, NEW MEXICO 87502



HAPPY HOLIDAYS TO ALL